

5-in-1 Universal  
High Voltage  
and Diagnostic  
Testing System

# HVA 28 / HVA 28 - TD

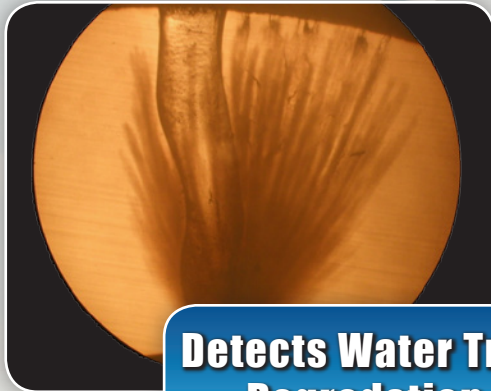
smart VLF™



The smallest  
VLF & TD unit  
available!  
14 kg / 31 lbs

VLF Jacket  
DC Tan Delta  
Fault Conditioning

With  
Intergrated  
Tan Delta!



Detects Water Tree  
Degredation



# HVA28 / HVA28-TD

## Technical Data

| Model                             |              | HVA28  | HVA28-TD               |
|-----------------------------------|--------------|--|------------------------|
| Ordering Information              |              | 702 001  | 702 003                |
| Input Voltage                     |              | 100 - 240 V, 50/60Hz (400 VA)  |                        |
| Output Voltage                    | Sinusoidal   | 0 – 30kV peak / 21kV rms   |                        |
|                                   | DC           | ± 0 - 28 kV  |                        |
|                                   | Squarewave   | 28 kV  |                        |
|                                   | Accuracy     | ±1%  |                        |
|                                   | Resolution   | 0.1 kV   |                        |
| Output Current                    |              | 0 - 20 mA (Resolution 1 µA) Accuracy: ± 1%   |                        |
| Resistance Range                  |              | 0.1 MΩ ... 5GΩ   |                        |
| VLF Output Frequency              |              | 0.01 ... 0.1Hz in steps of 0.01 Hz (default 0.1 Hz) - auto frequency selection   |                        |
| Output Load                       |              | 0.5 µF @ 0.1 Hz @ 20kV rms<br>5.0 µF @ 0.01 @ 20kV rms<br>10.0 µF maximum capacitance*   |                        |
| Output Models                     |              | AC (VLF) Symmetrical and load independent across full range, DC (positive or negative polarity), Burn -/ Fault Condition or Fault Trip Mode, Jacket/Sheath Testing |                        |
| Sheath Test/Sheath Fault Location | kV           | 0 - 10 kV  |                        |
|                                   | Trip Current | 0.1 - 5 mA   |                        |
|                                   | Pulse/Period | Variable   |                        |
| Safety                            |              | 50 / 60 Hz - 12 kV Feedback Protection/<br>Dual Discharge Device (internal)  |                        |
| Memory                            |              | 50 Test Records Stored (internal)  |                        |
| Metering                          |              | Voltage and Current (True rms and / or peak), Tan Delta, Capacitance, Resistance, Time, Flashover Voltage  |                        |
| Tan Delta measurement resolution  |              | —  | ± 1 x 10 <sup>-4</sup> |
| Duty Cycle                        |              | Continuous!  |                        |
| HV Cable                          |              | 5m/16.5ft with Alligator clamps  |                        |
| Software                          |              | “HVA Control Center”   | “TD Control Center”    |
| Computer Interfaces               | Bluetooth    | Standard   |                        |
|                                   | USB          | Standard   |                        |
| Environmental Conditions          |              | Storage: -25°C to +75°C / -13°F to 167°F<br>Operating: -5°C to 45°C / 23°F to 113°F  |                        |
| Dimensions L x W x H              |              | 430 x 240 x 340 mm / 16.9 x 9.4 x 13.4 inches  |                        |
| Weight                            |              | 14 kg / 31 lbs   |                        |
| Upgrades (Optional)               |              | Partial Discharge Diagnostic System PD30E<br>Rugged Transport Case for HVA28/TD and all accessories. Part # 702 005  |                        |



Optional Transport Case



PD30E

**Note:** Due to continuous development, the information detailed in this document may change without notice.