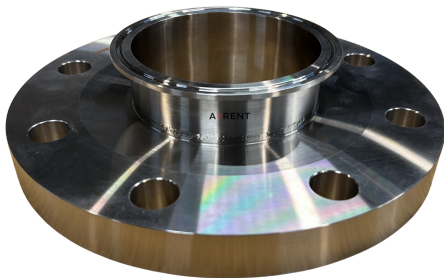


ADAPTERS

- Adapters facilitate comprehensive Technology Cooling System (TCS) loop commissioning with tie-in at each server cabinet connection
- A-Rent offers modular fluid flow manifold options to accommodate any TCS configuration with hose sizes of 1.5 inch and 2 inch

Flange Adapter



- ANSI Class 150 lb bolt pattern:
 - 4 inch flange to 4 inch (DN100) Tri-Clamp sanitary type fittings
 - 2 inch flange to 2 inch (DN50) Tri-Clamp sanitary type fittings
 - 1.5 inch flange to 1.5 inch (DN40) Tri-Clamp sanitary type fittings

Camlock Adapters



- Stainless steel cam and groove coupler with Tri-Clamp sanitary connection:
 - RC150SE for female 1.5 inch tie-in to 1.5 inch (DN40) Tri-Clamp sanitary type fittings
 - RE150SE for male 1.5 inch tie-in to 1.5 inch (DN40) Tri-Clamp sanitary type fittings
 - RC200SE for female 2 inch tie-in to 2 inch (DN50) Tri-Clamp sanitary type fittings
 - RE200SE for male 2 inch tie-in to 2 inch (DN50) Tri-Clamp sanitary type fittings

Danfoss FD83 Adapter



- Integrated coupling and ball valve creates secure connection and prevents leaks during position movements:
 - FD83-2128-16-16 for tie-in to 1 inch FD83 TCS connections from hose terminated with 1 inch (DN25) Tri-Clamp sanitary type fittings
 - FD83-2128-32-32 for tie-in to 2 inch FD83 TCS connections from hose terminated with 2 inch (DN50) Tri-Clamp sanitary type fittings