

TR3189



TOGETHER WE POWER THE WORLD®

For ABB HMB 4/8
Breaker
Mechanisms

DIGITAL LINEAR MOTION TRANSDUCER

The TR3189 Motion Transducer provides Doble's famous high-accuracy, high-precision, digital motion measurement in a transducer package custom-designed for the ABB HMB 4/8 family of circuit breaker operating mechanisms. ¹

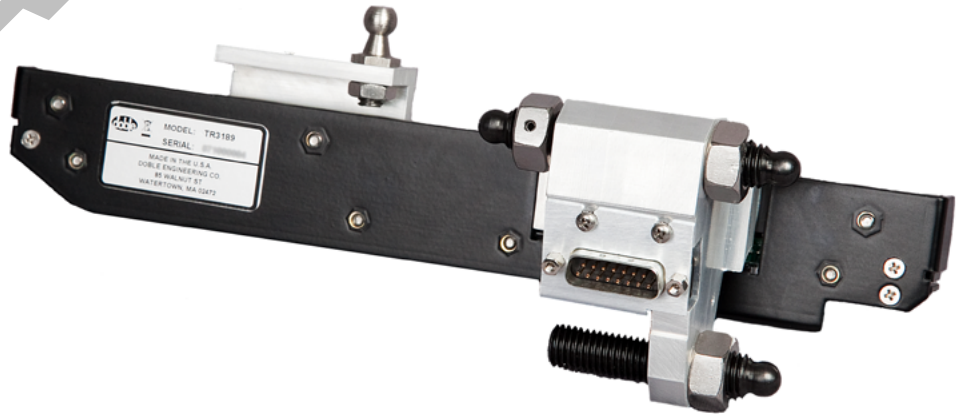
Features:

- Installs in minutes, with no adapters or modifications
- Provides direct capture of the breaker's true linear motion
- Designed to ABB factory specifications
- No scaling or translation required
- Use with Doble circuit breaker test instruments ²



TR3189 Technical Specifications*

Measurement Resolution:	0.00125"(0.03175mm)
Accuracy:	±0.1% of value ±0.01" max error
Velocity:	50 ft/sec (15 m/s) max
Acceleration:	1200g for 50µs max



¹ Designed for the ABB HMB 4, 8.2, 8.3, 8.7, 8.11, and 8.12 variants with 205mm stroke
² TDR9100, TDR900, and TDR9000/TR3000 with motion inputs

Specifications are subject to change without notice.

Doble is ISO Certified

Doble is an ESCO Technologies Company

MKT-SL-TR3189-04/13



Doble Engineering Company
Worldwide Headquarters
85 Walnut Street
Watertown, MA 02472 USA
tel +1 617 926 4900
fax +1 617 926 0528
www.doble.com

TOGETHER WE POWER THE WORLD

A-RENT

a-rent.com

(IL) 630.748.8900
(TX) 713.564.8900

sales@a-rent.com